



Dow Consumer & Industrial Solutions | Personal Care

---

## EcoSense™ Surfactants

### Overview Literature

A family of naturally sourced, biodegradable surfactants

---



## Overview

EcoSense™ Surfactants are a family of naturally sourced, readily biodegradable surfactants from Dow. They have been specially developed to help create end-use formulations that offer optimum performance with excellent sensory appeal. Belonging to the family of Alkyl Polyglucosides, EcoSense™ products can be used as both primary and co-surfactants in a variety of cleansing applications, such as shampoos, body washes, facial cleansers, liquid hand soaps and baby wipes.

EcoSense™ Surfactants provide a new solution to help meet consumers' growing demands for personal care products that are milder to the skin and hair, have an improved environmental profile, and are naturally derived. EcoSense products are listed on ECOCERT and certified by the Natural Products Association, and are an ideal choice for formulators looking to develop products with “natural” label claims without any compromise on product performance.



EcoSense™ Surfactants offer several benefits to hair and skin cleansing formulations:

- Excellent flash foam
- Improved rinsability
- Allows formulators to develop mild cleansing formulations

## EcoSense™ Surfactants at a Glance

(These are typical properties, not to be construed as sales specifications.)

	EcoSense 1200	EcoSense 919	EcoSense 3000
<b>INCI name</b>	Lauryl Glucoside	Coco-Glucoside	Decyl Glucoside
<b>Description</b>	Alkyl Polyglucoside, C12-16	Alkyl Polyglucoside, C8-C16	Alkyl Polyglucoside, C8-C16
<b>% Solids</b>	~50%	~50%	~50%
<b>Recommended Use Level</b>	1 – 15%	1 – 15%	1 – 15%
<b>Appearance</b>	Hazy, pale yellow viscous liquid	Hazy, pale yellow liquid	Hazy, pale yellow liquid
<b>Viscosity (mPas) @ 40°C</b>	~4,000	~1,000	~400
<b>CMC<sup>1</sup></b>	74.3	67.2	50.1
<b>pH (10% aqueous)</b>	12	12	12
<b>Surface tension<sup>2</sup></b>	29	29	29

<sup>1</sup>Critical Micelle Concentration: ppm @ 25°C; <sup>2</sup>Surface Tension: dynes/cm at 1% actives, 25°C

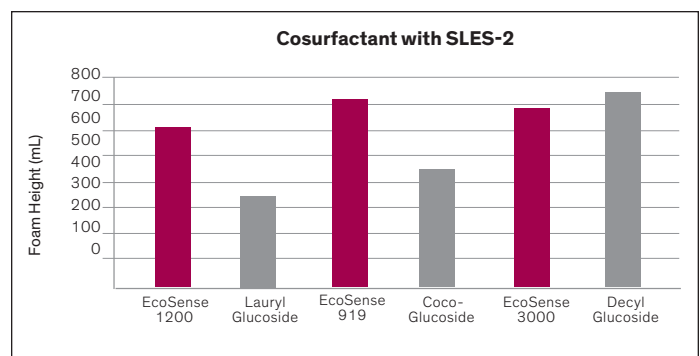
## Performance as a Co-Surfactant

EcoSense™ Surfactants have been shown to demonstrate excellent performance as a co-surfactant in multiple shampoo formulations. In these types of formulations, they have been shown to provide equal or improved flash foam and rinsability with a comparable or lower potential for skin irritation as compared to conventional Alkyl Polyglucosides.

### Equivalent or Improved Flash Foam

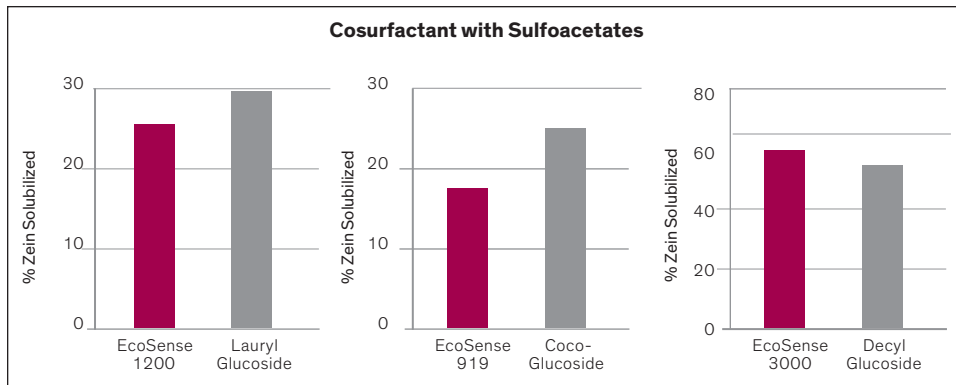
A blender foam test was conducted to evaluate the flash foam performance of EcoSense™ Surfactants in shampoo formulations as a co-surfactant with Sodium Laureth Sulfate (SLES). Initial foam heights were recorded at time 0 as an indication of flash foam performance.

As shown in the following chart, the flash foam generated with the shampoo formulations based on EcoSense™ Surfactants was equivalent to or better than that of shampoo formulations based on conventional Alkyl Polyglucoside technologies.



### Equivalent or Reduced Skin Irritation Potential

A modified Zein test was conducted to evaluate the skin irritation potential of EcoSense™ Surfactants in a sulfate-free shampoo formulation as a co-surfactant with Sulfoacetates. As shown in the following chart, a comparable to lower percentage of Zein was solubilized in the shampoo formulations based on EcoSense Surfactants as compared to shampoo formulations based on conventional Alkyl Polyglucoside technologies, demonstrating the reduced potential for irritation to the skin.

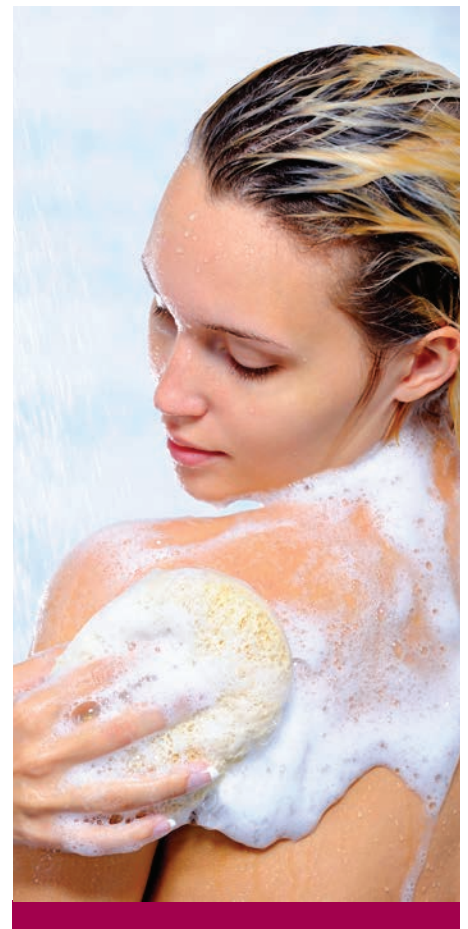
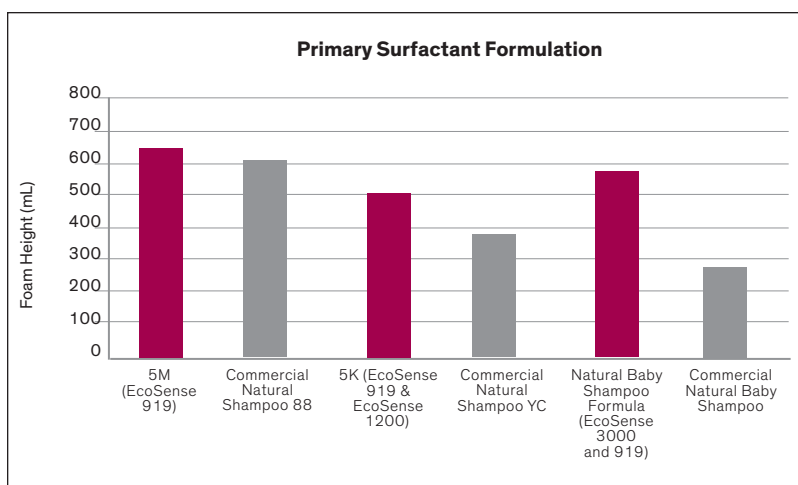


## Performance as the Primary Surfactant

EcoSense™ Surfactants are an ideal choice as the primary surfactant in formulations promoting “all-natural” claims. In these types of formulations, they have been shown to provide improved flash foam as compared to conventional Alkyl Polyglucoside technologies.

### Improved Flash Foam

The blender foam test described earlier was also conducted to evaluate the flash foam performance of EcoSense™ Surfactants in shampoo formulations, with foam heights recorded over a period of 30 minutes. As shown in the following chart, the flash foam generated with the shampoo formulations based on EcoSense™ Surfactants was higher than that of commercial shampoo formulations.



## Interested in Learning More?

For more information on EcoSense™ Surfactants and how it can be used in your formulation, please contact us at the numbers listed below, or visit us online at [dcis.dow.com](http://dcis.dow.com).

---

### From North America

Toll-free 800-447-4369  
Toll call 989-832-1542  
Fax 989-832-1465

### From Europe, India, Africa and the Middle East

Toll-free\* 800-3-694-6367  
Toll call + 32-3-450-2240  
Toll-free for Italy 800-783-825  
Toll-free for South Africa 800-99-5078  
Fax + 32-3-450-2815

### From Asia Pacific

Toll-free\*\* + 800-7776-7776  
Toll call + 60-3-7965-5392  
Toll-free fax\*\* + 800-7779-7779  
Toll fax + 60-3-7958-5598

### From Latin America

Toll call + 55-11-5188-9000  
Fax + 55-11-5188-9887

[dcis.dow.com](http://dcis.dow.com)



For access using your smartphone scan the QR code above.

\* Toll-free from Austria, Belgium, Denmark, Finland (prefix 990), France, Germany, Hungary, Ireland, The Netherlands, Norway, Portugal, Spain, Sweden, Switzerland, and the United Kingdom

\*\* Toll free from Korea, Japan, China, Taiwan, Hong Kong, Thailand, Malaysia, Singapore, Philippines, Australia, and New Zealand

---

®™ Trademark of The Dow Chemical Company ("Dow") or an affiliated company of Dow  
ZinClear is a trademark of Antaria Limited; all other trademarks are the property of The Dow Chemical Company ("Dow") or an affiliated company of Dow

NOTICE: No freedom from infringement of any patent owned by Dow or others is to be inferred. Because use conditions and applicable laws may differ from one location to another and may change with time, Customer is responsible for determining whether products and the information in this document are appropriate for Customer's use and for ensuring that Customer's workplace and disposal practices are in compliance with applicable laws and other government enactments. The product shown in this literature may not be available for sale and/or available in all geographies where Dow is represented. The claims made may not have been approved for use in all countries. Dow assumes no obligation or liability for the information in this document. References to "Dow" or the "Company" mean the Dow legal entity selling the products to Customer unless otherwise expressly noted. NO WARRANTIES ARE GIVEN; ALL IMPLIED WARRANTIES OF MERCHANTABILITY OR FITNESS FOR A PARTICULAR PURPOSE ARE EXPRESSLY EXCLUDED.